

Developing a network of Community Hubs

Health and Wellbeing Board

9 March 2021

Introduction and purpose

Partners in Barking and Dagenham are committed to building strong relationships with communities and residents and working together to address the key issues and challenges the borough faces. In support of this ambition, we want to put public services at the heart of our communities, through the further development of community hubs.

Building on what exists now - our ambition is to create a network of hubs across the borough. They will be places that make it easy for residents to talk to someone, find support to help themselves, to access a mix of universal, targeted, and statutory services when needed and to facilitate stronger interaction with and between residents, organisations and workforce that promote active citizenship, agency and participation – ***a place to go, a place to talk, a place to do.***

These slides set out emerging proposals and a community hub model.

Board is asked to consider and comment on:

- What opportunities do community hubs present for joint working
- How can community hubs support locality working arrangements
- How can partners engage with the programme



Vision

a place to go

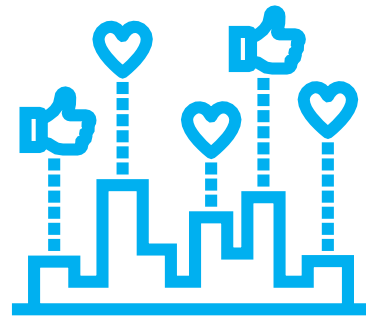
a place to talk

a place to do

A network of ward based community hubs...



Welcoming, accessible, safe, multi-purpose place that is recognised and valued by local people



Place to go to tell your story and access a range of universal and targeted information, advice, and services that respond to local needs



Offer spaces, activities and services that are created and designed with residents and community

By establishing a network of community hubs our ambition is to:



Better understand local aspirations and needs and shape services and support to address this



Provide a core information and advice offer and a mix of services delivered side by side with partners



Provide universal and more targeted services that are evidence based



Make it easier to access help to support yourself and be connected to help and support when needed



Facilitate more joined up locality working by networking hubs, alongside social sector/VCSE, schools, health



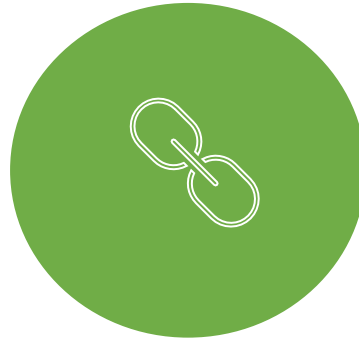
Make better use of assets to facilitate more flexible working

Model will recognise and build on existing work and good practice



Service delivery

- Heathway disability provision to Becontree Hub
- IAPT co-location @ BLC & Dagenham hubs
- Social prescribing – platform to connect
- The Source – food club @ BLC hub
- Existing community led spaces e.g. Hub@Castlepoint



Collaborative working

- BD-CAN and community Covid support
- Existing locality structures and team working
- Team Around the School
- Community MH neighbourhood proposals



Design led learning

- Early help for families
- Re-imagining adult social care – relationship, learning and design networks
- Thames Ward – potential to trial new model of care @ Sue Bramley Hub and Thames View

And facilitate opportunities to deliver services differently



Active ageing



Parenting & speech
& language



Assistive technology
show cases



Mental health
community model



Dementia pathways &
day support



YARM & Youth
Work



Primary care clinics/
roadshows



0-5 LD health
visiting

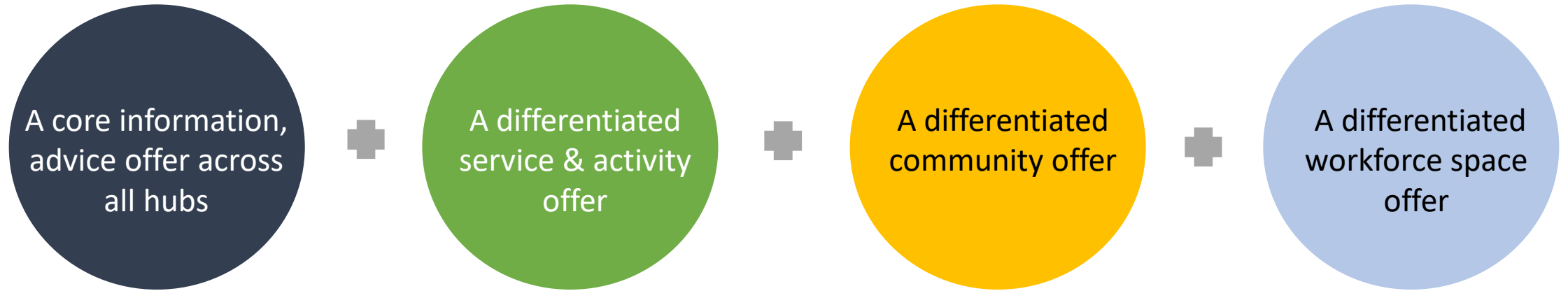


Older adults
activities



Workforce / locality
team touch-down
space

Overview: community hubs will be developed across four core parts



Based on building space, local need, evidence and future service configuration



Informed by

Evidence about what works & what exists now

Resident and experience led design

Data and insights about local needs and strengths

Delivered through

An iterative and phased design approach – do and learn

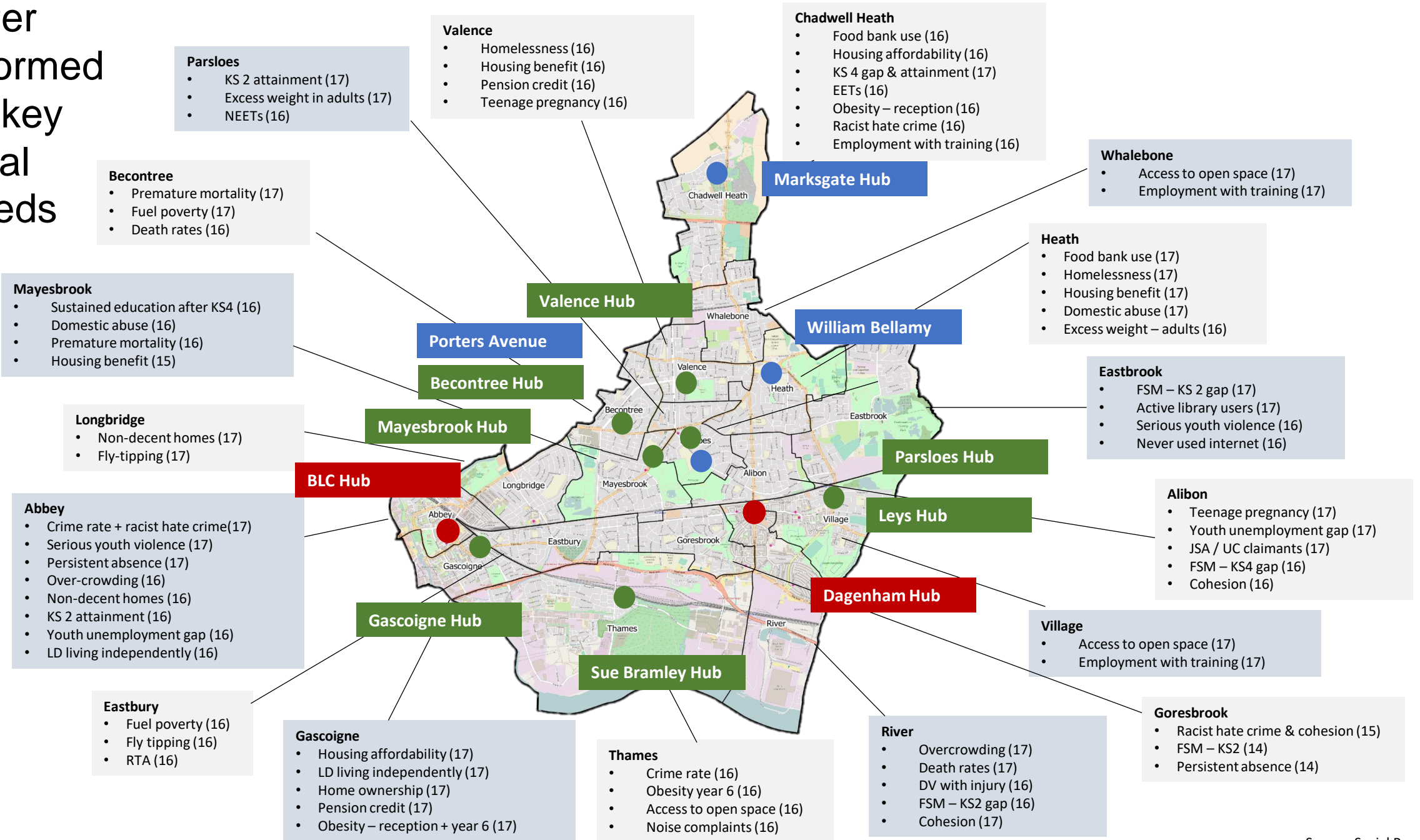
A core information and advice offer consisting of:

- Early years and under 5's offer
- Money and debt
- Jobs and skills
- Housing
- Benefits
- Health and well-being – MH and DV
- Online and digital support
- Volunteering
- Reporting a crime
- Accessing food support
- General advice e.g registering with GP

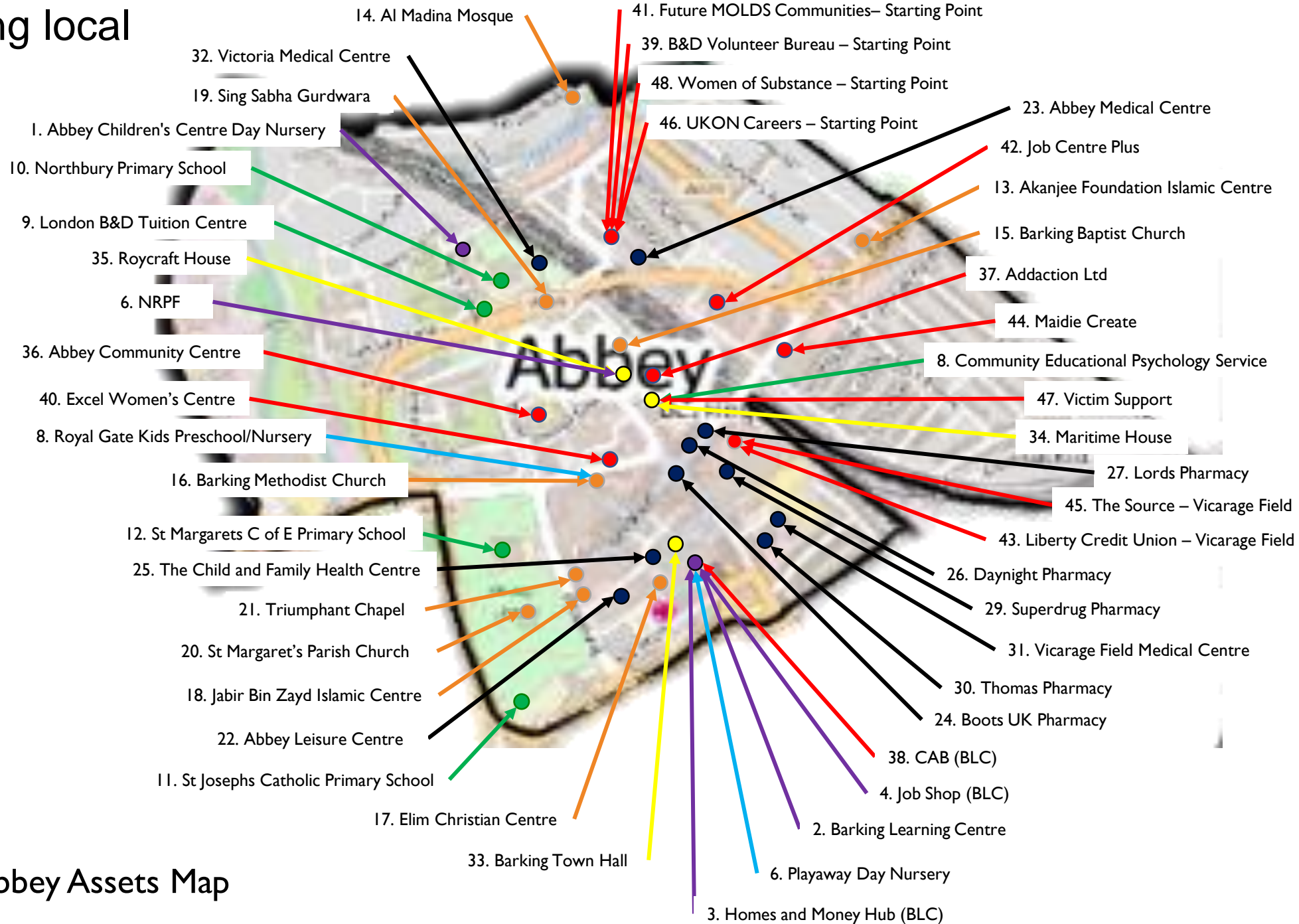
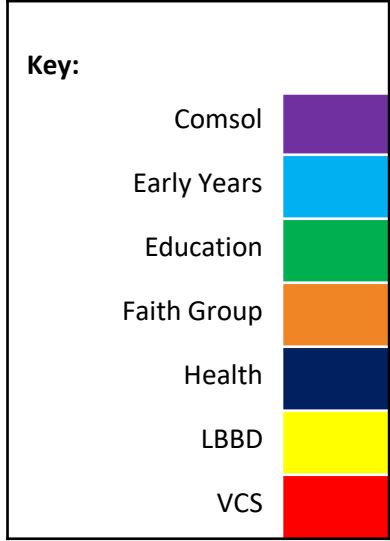
A services and activity offer that varies by hub and will include:

- Welfare support such as housing, debt, benefits, job support and skills development, digital inclusion, food clubs
- Support for children, young people, and family support such as parenting, therapy, contact sessions, drop-in, family group conferencing, youth work
- Age-related and disability support such as memory activities, lunch clubs, active ageing and well-being activities that facilitate connection and address loneliness and isolation
- General enquiries – support with accessing services, finding information, completing forms/assessments, online support

Offer informed by key local needs



And build on existing local assets



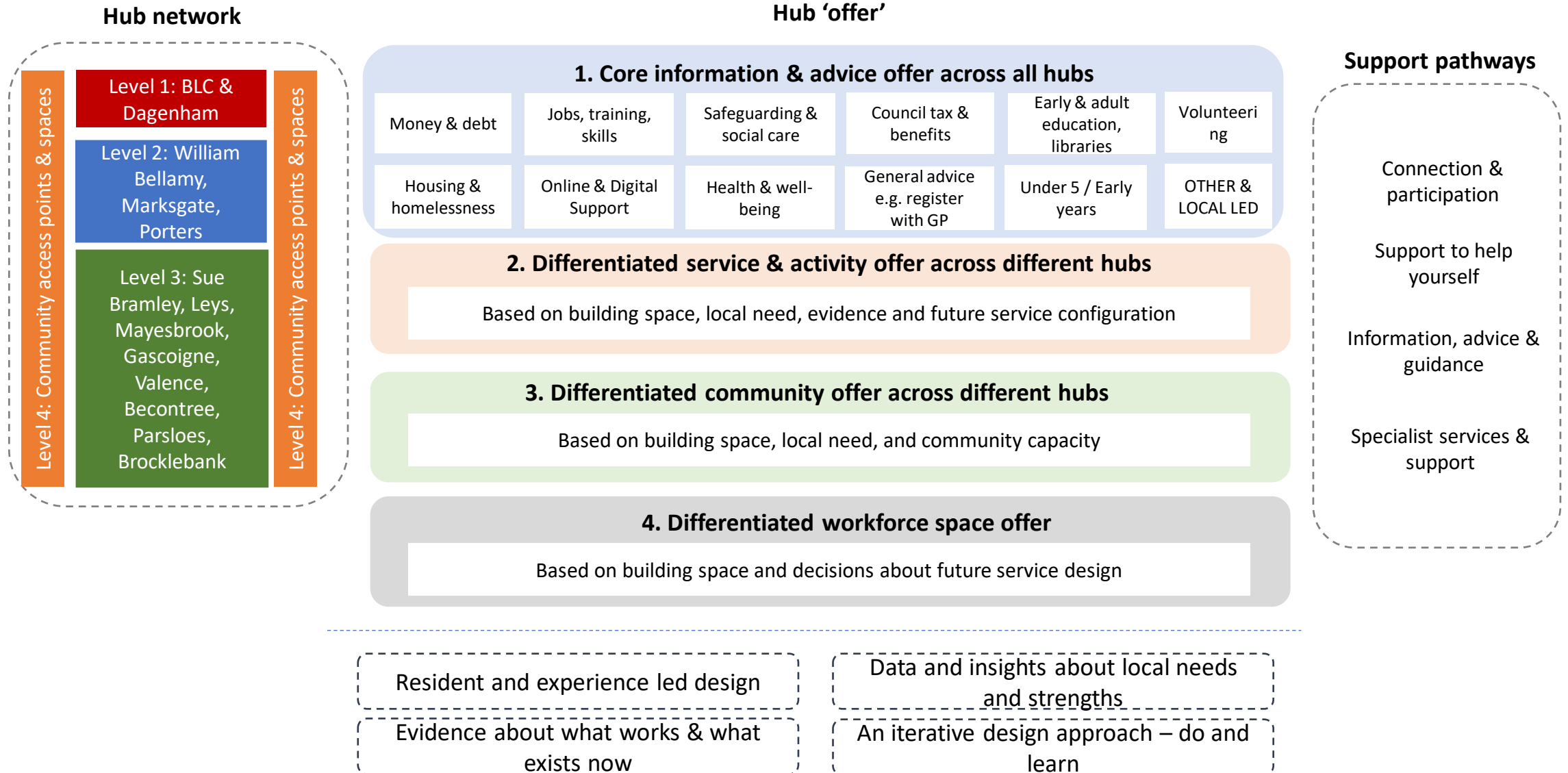
Indicators where Abbey ranks 17th

- Crime rate
- Serious youth violence
- Persistent absentees
- Broadband speed
- Voter registration
- Racist hate crime

Indicators where Abbey ranks 16th

- Overcrowding
- Pest control
- Non-decent homes
- KS2 attainment
- Air pollution
- Home ownership
- LD independent living

An emerging framework to guide the further design and development of hubs

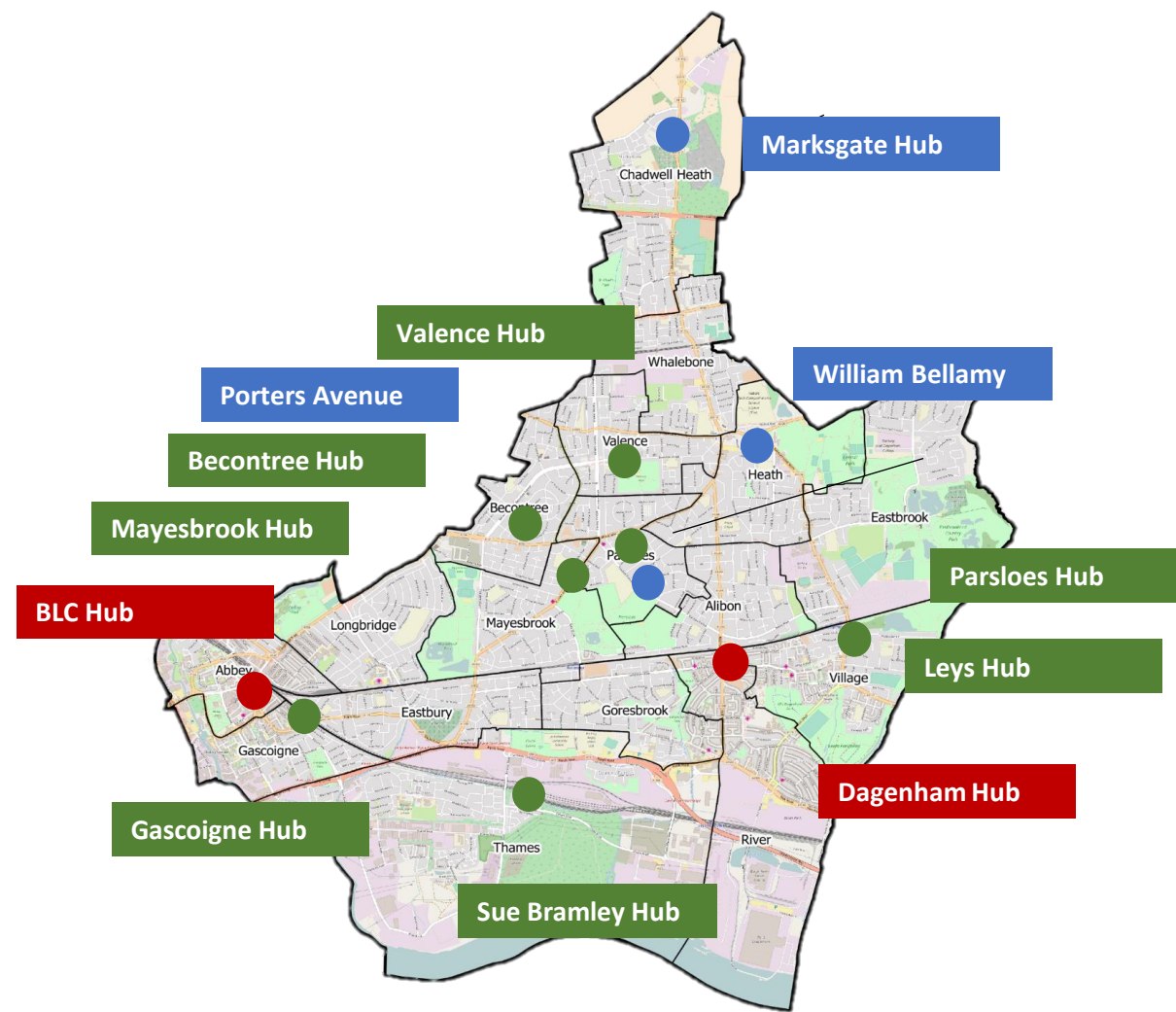


Emerging hub network...

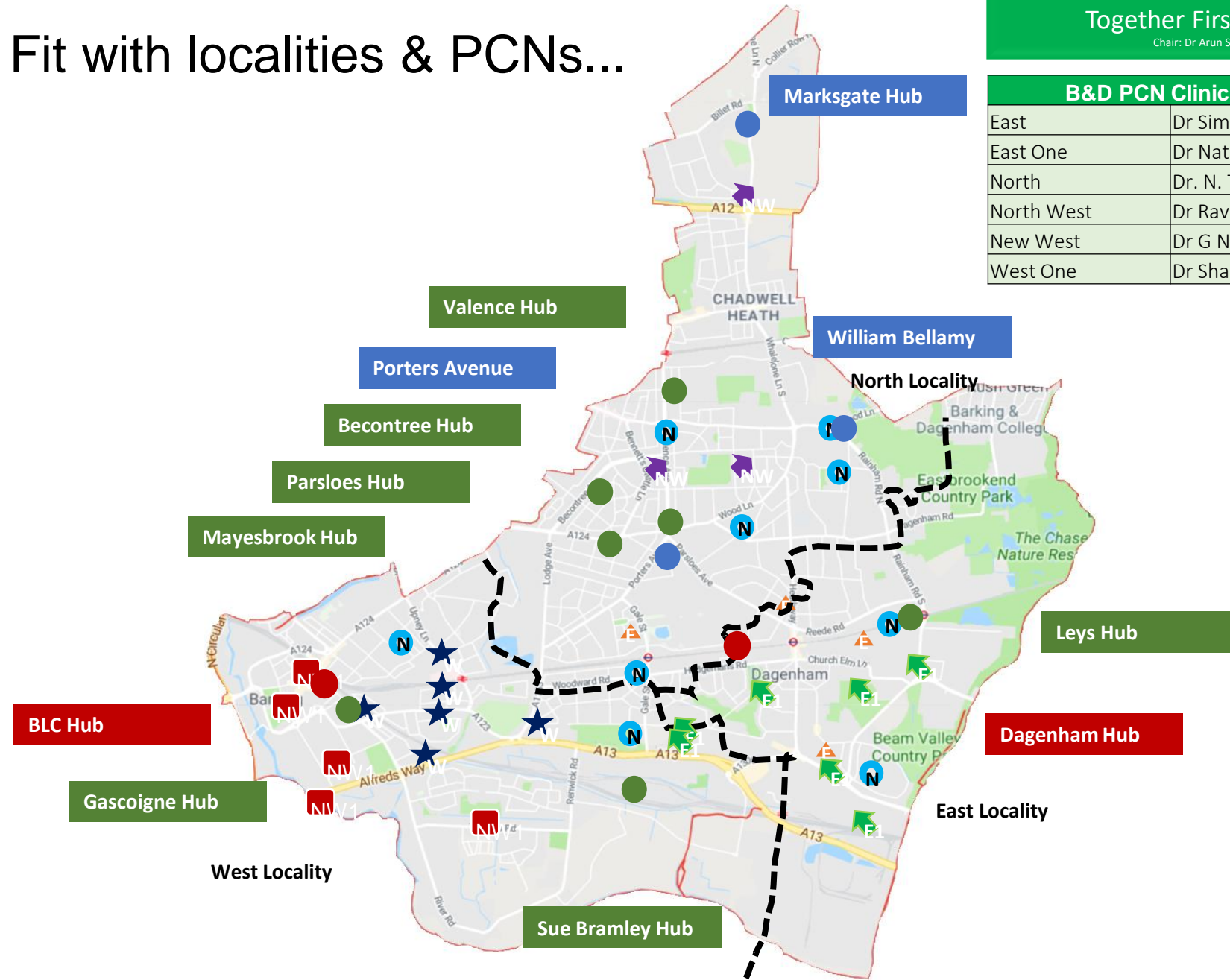
Level	Hubs
Level 1	Barking Learning Centre (BLC) & Dagenham
Level 2	William Bellamy, Marksgate, Porters Avenue
Level 3	Sue Bramley, Valence, Gascoigne, Mayesbrook (specialist children's), Leys, Becontree, Parsloes (+potential community spaces), Brocklebank (development to replace Valence library)

Community spaces and access points

Community hosted spaces & cultural venues including:
 Hub@Castle Point, Kingsley Hall, Excel Women's Centre,
 BoatHouse, Future Youth Zone, Hedgecock Centre, Valence
 Primary Roost, BD Carers, St Chads



Fit with localities & PCNs...



GP Federation:
Together First Limited
 Chair: Dr. Arun Sharma

B&D PCN Clinical Directors

East	Dr Simi Adedeji
East One	Dr Natalia Bila
North	Dr. N. Teotia
North West	Dr Ravi Goriparthi
New West	Dr G Niranjn
West One	Dr Shanika Sharma

North Primary Care Network; 8 practices
 List size 45,669

Green Lane Surgery	3740
Dr S Z Haider & Partners	5704
Dr A K Sharma	9872
Dr A Arif	4533
Five Elms Medical Practice	4057
Gables Surgery	6876
Dr M Ehsan	3042
Dr B K Jaiswal	5415
Dr Prasad (Faircross Health Centre)	2430
Total	45,669

North West PCN; 3 practices
 List size 32,637

Mark's Gate Health Centre	4943
Tulasi Medical Centre	21062
Becontree Medical Centre	6632
Total	32,637

West One Primary Care Network; 6 practices
 list size 40,489

Drs Chibber & Gupta	4465
Drs Sharma & Rai	5492
Highgrove Surgery	7961
Dr Ansari & Ansari	8270
The Barking Medical Group Practice	11348
The John Smith Medical Centre	2953
Total	40,489

New West PCN: 5 practices
 List size 30,973

Abbey Medical Centre	6949
Dr G. Kalkat	8538
Dr N. Niranjn	4869
Drs John & John	8415
Shifa Medical Practice	2202
Total	30,973

East Primary Care Network; 4 Practices
 List size: 39,458

Broad Street Medical Centre	6553
Porters Avenue (merged 01.04.2019 with Child & Family)	8898
Church Elm	6204
Halbutt Street Surgery	6779
Child and Family Health	11,024
Total	39,458

East ONE Primary Care Network; 7 Practices
 List size: 37,134

Dr Alkaisy Surgery	4682
First Avenue Surgery	5401
Heathway Medical Centre	4895
Hedgemans rd	5717
Parkview	4598
St Albans Surgery	8076
The Surgery (Dr Ola)	3765
Total	37,134

Source: Google maps

Some next steps

- Engagement with PCN (clinical directors)
- Engagement through Barking and Dagenham Delivery Group
- Community and social sector workshops (March and April)
- Work up opportunities identified for service delivery and establish an agreed prioritised plan
- Finalise a definitive community hub network as the basis for the next 12 months
- Finalise delivery plan for the next 12 months
- Community hubs communication and marketing materials – to showcase spaces and opportunities

Questions

Board is asked to consider and comment on:

- What opportunities do community hubs present for joint working
- How can community hubs support locality working arrangements
- How can partners engage with the programme

Appendix 1: High level timeline

	Jan-21	Feb-21	Mar-21	Apr-21	May-21	Jun-21	Jul-21	Aug-21	Sep-21	Oct-21	Nov-21	Dec-21	Jan-22	Feb-22	Mar-22	Apr-22	May-22	Jun-22	Jul-22	Aug-22	
Community Hubs																					
Strand 1: Hub network design and launch																					
Overall hub network model	█	█	█																		
Level 1 - core hubs				█	█	█	█	Level 1 launch: July 21				█	█	█	█	█	█	█	█	█	█
Level 2 - local hubs						█	█	█	█	Level 2 launch: September 21				█	█	█	█	█	█	█	█
Level 3 - local hubs								█	█	█	█	Level 3 launch: November 21				█	█	█	█	█	█
Level 4 - community access points										█	█	█	█	█	█	Level 4 launch: March 22				█	█
Strand 2: Operating arrangements					█	█	█	█	█	█	█	█	█	█	█	█	█	█	█	█	█
Strand 3: Service delivery & configuration							█	█	█	█	█	█	█	█	█	█	█	█	█	█	█
Strand 4: Future governance, ownership, commissioning arrangements													█	█	█	█	█	█	█	█	█
Developing new core provision - options		█	█	█	█	Options appraisal															
Community design prototype			█	█	█	█	█	█	█												
Strand 5: Dispersed Working																					
Town Hall plans agreed					█																
Roycraft House vacated. Secure base established						█															
Town Hall reconfiguration implementation						█	█	█	█	█	█	█	█	█	█						
Dispersed workforce measures						█	█	█	█	█	█	█	█	█	█						